

ITS Singapore

Regional Leaders Forum

28.04.2022

Fred Kalt

President ITS Singapore

Managing Director Asia Pacific

Yunex Traffic (Yutrafic)

Fred.Kalt@yunextrafic.com

Mobile: +6581233718

Singapore's Key Mobility Challenges



Click to add text

Increasing Travel Demand
Population increase, intensive development and change in lifestyle

Land Constraints
>12% of total land used for road and land transport infrastructure

Aging Population
30% aged 65 and above by 2030

Manpower & Digital Competencies
Shortage of labour in specific industry and relevant digital knowledge

Singapore's Answer



Tackling The Mobility Challenges in Singapore

LAND TRANSPORT MASTER PLAN 2040

1st Objective

20-Minute Towns and a 45-Minute City



The Land Transport Master Plan (LTMP) 2040 envisions a land transport system that is convenient, well-connected and fast using Walk, Cycle, or Ride transport options.



Learn more about how we're connecting homes, communities and workplaces at www.lta.gov.sg/ltmp2040

By walking, cycling or riding, you can:

Take no more than 20 minutes to get from home to the nearest neighbourhood centre.



Take 45 minutes or less in most cases to reach your workplace during peak periods.



2nd Objective

Healthy Lives, Safer Journeys



The Land Transport Master Plan (LTMP) 2040 envisions a land transport system that creates a safer, healthier and more liveable environment, filled with vibrant community spaces.



Learn more about how we're connecting homes, communities and workplaces at www.lta.gov.sg/ltmp2040



3rd Objective

Transport for All



The Land Transport Master Plan (LTMP) 2040 envisions a land transport system that is more inclusive and supported by a gracious and caring commuting culture.

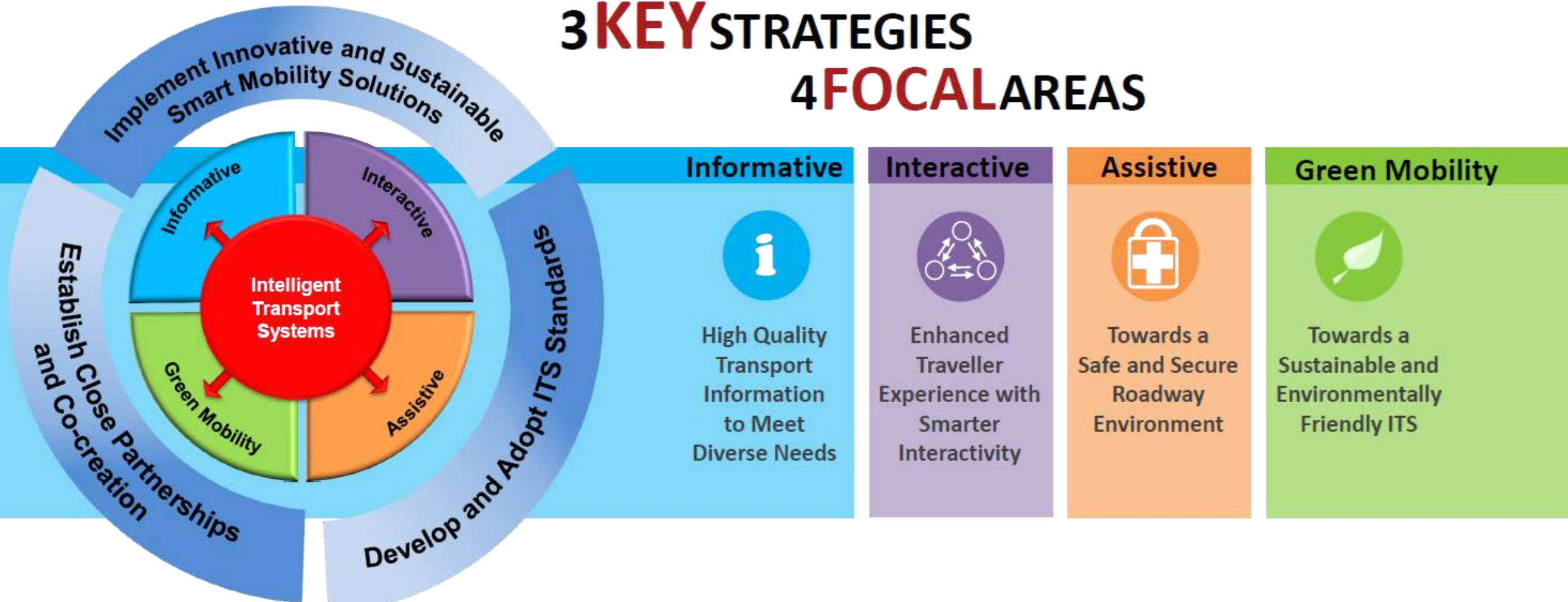


Learn more about how we're connecting homes, communities and workplaces at www.lta.gov.sg/ltmp2040



Smart Mobility Masterplan 2030

3 KEY STRATEGIES 4 FOCAL AREAS



Encouraging EV Adoption in Singapore



Source: Vulcan Post, “Budget 2021: S’pore To Set Aside \$30M For EV-Related Initiatives – Raises Petrol Duty Rate, 16 February 2021

- From 2025, **no new diesel car registrations**
- From 2030, **all new car registrations to be of cleaner-energy models**
- Singapore is **continually revising the EV road tax structure** to better align rates paid by electric cars and ICE cars of similar look and feel



Source: Asiaone, “Singapore to have 28,000 EV charging stations by 2030”, 20 February, 2020.

- **More than double the earlier target to 60,000 charging points**
- **Slow charging** to be the most common charging mode at residences and workplaces
 - Fits usage patterns of most motorists
 - Utilise smart charging to enable load balancing while minimising costly electrical upgrades
- **Complementary fast chargers** can cater to both public EV users and specific segments like taxi drivers or commercial fleet drivers with high usage

City in Nature

- Green, Liveable and Sustainable Home for Singaporeans**
- Plant 1 million more trees, and have every household within a 10-minute walk from a park by 2030
 - Develop over 130 ha of new parks, and enhance around 170 ha of existing parks with more lush vegetation and natural landscapes by end-2026
 - Add 1000ha of green spaces by 2035

Green Government

- Public sector will lead on sustainability**
- Be exemplary in taking sustainability action, including to peak public sector carbon emissions around 2025, ahead of national target
 - Encourage and enable citizens and businesses to adopt sustainability practices, such as through green procurement

Sustainable Living

- Strengthen Green Efforts in Schools**
- Introduce an Eco Stewardship Programme to enhance environmental education in all schools
 - Work towards two-thirds reduction of net carbon emissions from schools sector by 2030
 - At least 20% of schools to be carbon neutral by 2030
- Green Commutes**
- 75% of trips during peak periods to be on mass public transport by 2030
 - Triple cycling path network to 1,320km by 2030, from 460km in 2020
 - Expand rail network to 360km by early 2030s, from around 230km today
- Green Citizenry: Reduce waste and consumption**
- Reduce amount of waste to landfill per capita per day by 20% by 2026, and 30% by 2030
 - Reduce household water consumption to 130 litres per capita per day

Energy Reset

- Cleaner-energy Vehicles**
- New diesel car and taxi registrations to cease from 2025, with all new car and taxi registrations to be of cleaner-energy models from 2030
 - Further revise road tax structure to bring down road tax for mass-market electric cars
 - Target 60,000 electric vehicle (EV) charging points by 2030, with 8 EV-Ready Towns by 2025
- Greener Infrastructure & Buildings**
- Green 80% of Singapore's buildings (by Gross Floor Area) by 2030
 - 80% of new buildings (by Gross Floor Area) to be Super Low Energy buildings from 2030
 - Best-in-class green buildings to see 80% improvement in energy efficiency (over 2005 levels) by 2030
- Sustainable Towns & Districts**
- Reduce energy consumption in HDB towns by 15% by 2030
- Green Energy**
- Quadruple solar energy deployment to 1.5 gigawatt-peak by 2025
 - Tap on cleaner electricity imports, and increase R&D on renewable energy and emerging low-carbon technologies

Green Economy

- Sustainability as New Engine of Jobs and Growth**
- New Enterprise Sustainability Programme to help local enterprises adopt sustainability practices
 - Develop Singapore to be a carbon services hub, and a leading centre for green finance in Asia and globally
 - Develop Jurong Island to be a sustainable energy and chemicals park
 - Leverage opportunities in sustainable industries to create good jobs for Singaporeans
- New Investments to be Carbon and Energy Efficient**
- Seek new investments to be among the best-in-class in energy/carbon efficiency

Resilient Future

- Safeguarding our Coastlines against Rising Sea Levels**
- S\$5b dedicated to coastal and drainage flood protection measures
 - Formulation of coastal protection plans for City-East Coast, North-West Coast (Lim Chu Kang and Sungei Kadut) and Jurong Island by 2030
- Safeguarding Food Security**
- Produce 30% of our nutritional needs locally and sustainably by 2030, through developing land and sea space and skilled workers, funding support, and promoting R&D
- Keeping Singapore Cool**
- Moderate the rise in urban heat, such as with cool paint and by increasing greenery

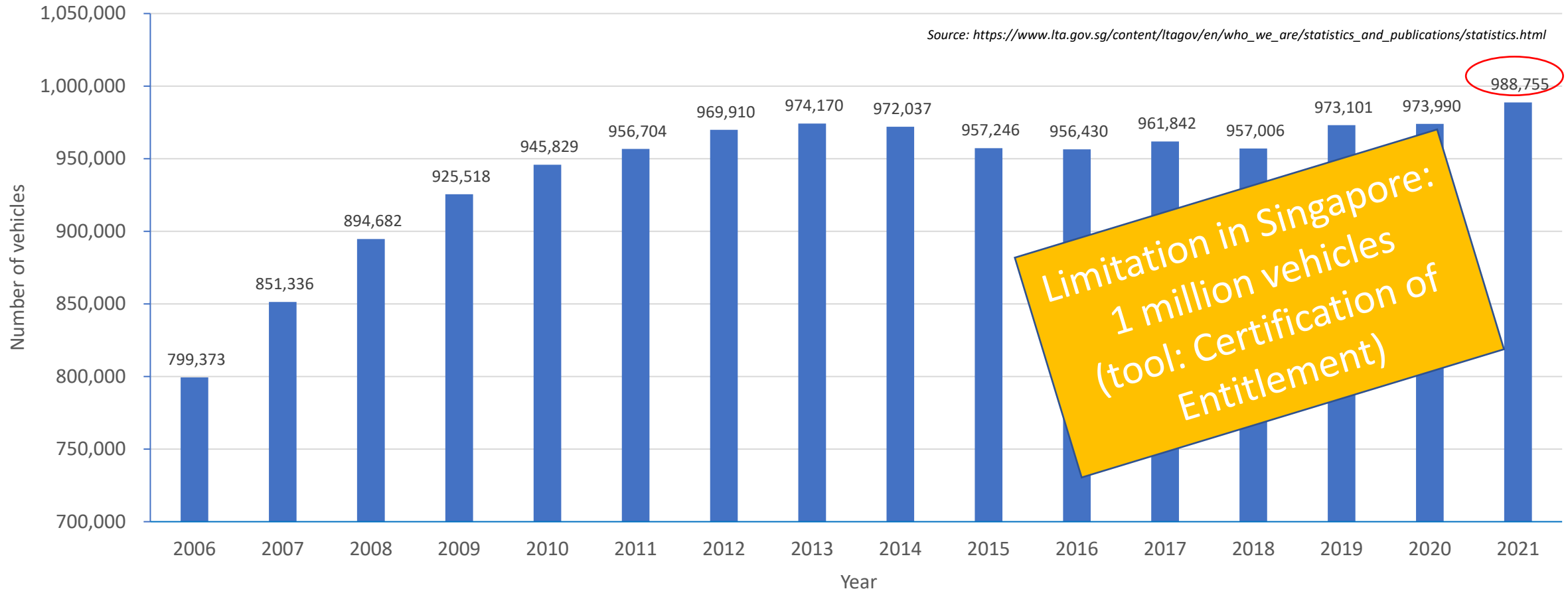
Jointly led by:



www.GreenPlan.gov.sg

Total Vehicle Population in Singapore

Total Vehicle Population Trend in Singapore



ITS Singapore

Regional Leaders Forum 2
28.04.2022

Fred Kalt

President ITS Singapore

Managing Director Asia Pacific

Yunex Traffic (Yutrafic)

Fred.Kalt@yunextrafic.com

Mobile: +6581233718